



Introduction to the Forensic Experiential Trauma Interview (FETI®)

TRAINING TYPE

In-person Training

TRAINING PRICE

\$395

TRAINING DURATION

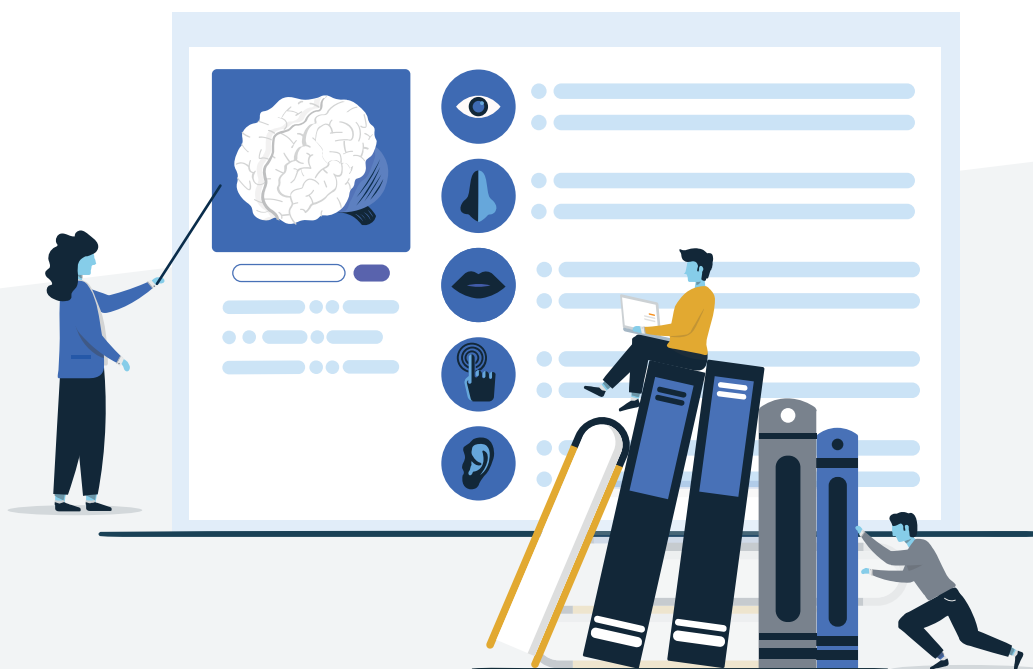
2 days (9am-5pm)

CREDIT HOURS

14 hours

PREREQUISITES

None





CERTIFIEDFETI®

JOIN OUR TRAINING IN ROCHESTER, MN

AT ROCHESTER POLICE DEPARTMENT - RPD NORTH STATION

March

20-21

COURSE:

INTRODUCTION TO THE FORENSIC EXPERIENTIAL TRAUMA INTERVIEW

📍 Rochester, MN

📅 2 Days (9am-5pm)

💰 \$395

INSTRUCTOR:

Lori Heitman

Register at www.certifiedfeti.com to attend this training.

WHO IS THIS TRAINING FOR?

Law Enforcement

Prosecutors

Higher Education

Community Partners

Healthcare Professionals

Learn more about who this training is for
at certifiedfeti.com

TRAINING HOSTED BY:

Rochester Police Department



Contact: Sgt. Mike Walsh at
mwalsh@rochestermn.gov



CERTIFIEDFETI®

Copyright Veracities PBC www.certifiedfeti.com

Introduction to the Forensic Experiential Trauma Interview

About the Course

The Introduction to the Forensic Experiential Trauma Interview (FETI®) course provides attendees with an introduction to the FETI Methodology delivered through two days of live instruction by an Advanced Certified FETI Interviewer with significant experience both utilizing and teaching the FETI Methodology.

This course provides instruction on the official FETI Framework™, detailing how to correctly conduct a Forensic Experiential Trauma Interview. This training will provide attendees with the knowledge of the essential elements of a FETI interview, giving attendees the opportunity to immediately apply the knowledge from the training to their professional work.

Attendees who are new to the FETI Methodology or have attended a more abbreviated Certified FETI training course, will find this live, in-person training to be an educational and interactive way to learn how to conduct a FETI interview. The Introduction to FETI course provides a great foundation for those wanting to participate in more intensive, one-on-one, interview practice at a Practical Application of FETI® course.

Attendees must complete all coursework and fully participate in all exercises to receive a certificate of completion. Upon completion of the Introduction to FETI course, attendees will have completed the following objectives:

- ✓ Understand the FETI Framework
- ✓ Learn how to maximize opportunities for information gathering
- ✓ Learn how to utilize FETI Brain-Based Cues in interviews
- ✓ Understand the difference between an interview and an investigation
- ✓ Understand what to avoid when conducting a FETI

As instructors and active interview practitioners in the field, our primary goal of this course is to offer attendees the building blocks to successfully maximize information collection in a neutral and fair manner.

Course FAQs

What is the agenda for the course?

The Introduction to FETI course provides instruction in a lecture style format that is tailored to the training's attendees. As such, an agenda outlining a specific topic being instructed at a certain time is not possible. The following topics will be discussed but may be combined with other customization dependent on the intended audience: **The FETI Framework, Know Your Role, Interview vs Investigation, System of Security: How to prepare, Brain-Based Cues™, the Never Again 10™, Documentation Considerations, and the Continuum of an Interview.**

Is there additional training recommended to take with this course?

While the in-person Introduction to FETI course offers a great opportunity to learn the FETI Methodology, as with any skill, we recommend pairing this training with practice. Certified FETI recommends taking an in-person or online Practical Application of FETI course to help develop, practice, and enhance your FETI interviewing skills with the assistance of intensive feedback and guidance from our instructors.

Additionally, if individuals are interested in the distinction of being a Certified FETI Interviewer, we offer certification as well. While certification is not required, it does provide increased accountability, transparency, and skill set for the interviewer. And as a bonus, Basic certification is for life!

How can I register for this course?

Individuals can register by purchasing the Introduction to FETI course at www.certifiedfeti.com. This course is event-based meaning it is a live training event that is put on at different locations and dates throughout the year. You can select which training event you would like to attend after registration. Please see our calendar for a list of all Introduction to FETI events each calendar year.

Can we register a group?

Absolutely. For all group registration inquiries and group pricing, please visit www.certifiedfeti.com/about/organizations



Learn more about our training pedagogy at www.certifiedfeti.com/training

Q:

WHAT IS FORENSIC EXPERIENTIAL TRAUMA INTERVIEWING (FETI®)?

A:

Certified FETI® is the founding and governing body of the official Forensic Experiential Trauma Interview, a science and practice-based interviewing methodology informed by the latest research on the neurobiology of trauma and memory.

The Forensic Experiential Trauma Interview (FETI®) provides interviewers with a science-informed interviewing framework that maximizes opportunities for information collection and accurately documents the participant's experience in a neutral, equitable, and fair manner.

“

The impact of Certified FETI is profound; it has transformed the way we interact with victims, witnesses, suspects, and our own staff. This interviewing method results in a depth of information that was previously unmined.

Since implementing our FETI training, our officers have enhanced the quality of evidence in their investigations, but even greater than this, we are helping victims become whole again.



CHIEF CHARLIE DENNIS
HANOVER POLICE DEPARTMENT

Q: WHO IS FETI FOR? **As an Interviewer**

A: FETI® is used by professionals who interview in diverse areas such as (but not limited to) law enforcement, higher education, government, criminal prosecution, advocacy, journalism, healthcare, human resources, and family services.



**Law
Enforcement**



**Government
Organizations**



**Higher
Education**



**Advocates +
Community Partners**



**Healthcare
Professionals**



**Criminal
Prosecution**



**Journalists
and Media**



**Child and Family
Services**

**+ Many more
Interviewing
Professionals**

WHO IS FETI FOR (AS A PARTICIPANT)?

Absolutely everyone. We apply the FETI Methodology to every participant uniformly. For example, in the criminal justice arena we use the same interviewing methodology for victims and suspects.



THE STANDARD IN SCIENCE-BASED TRAUMA INTERVIEWING

tellmemore@certifiedfeti.com